

AERODROME GROUND
MOVEMENT CHART - ICAO

APRON ELEV 27 m

TWR 118.2 236.6
GND 121.675

JEJU / Jeju Intl
RWY 07/25, RWY 31 DEPARTURE

STANDARD GROUND TAXI PROCEDURES

- General
 - Departing IFR flights shall contact JEJU DELIVERY(121.925 MHz) to obtain ATC clearance at least 10 minutes prior to ETD and shall obtain push-back clearance and taxi instruction from JEJU GROUND(121.675 MHz).
 - TWY E3 not available for aircraft with a wingspan of 118 ft (36 m) or longer.

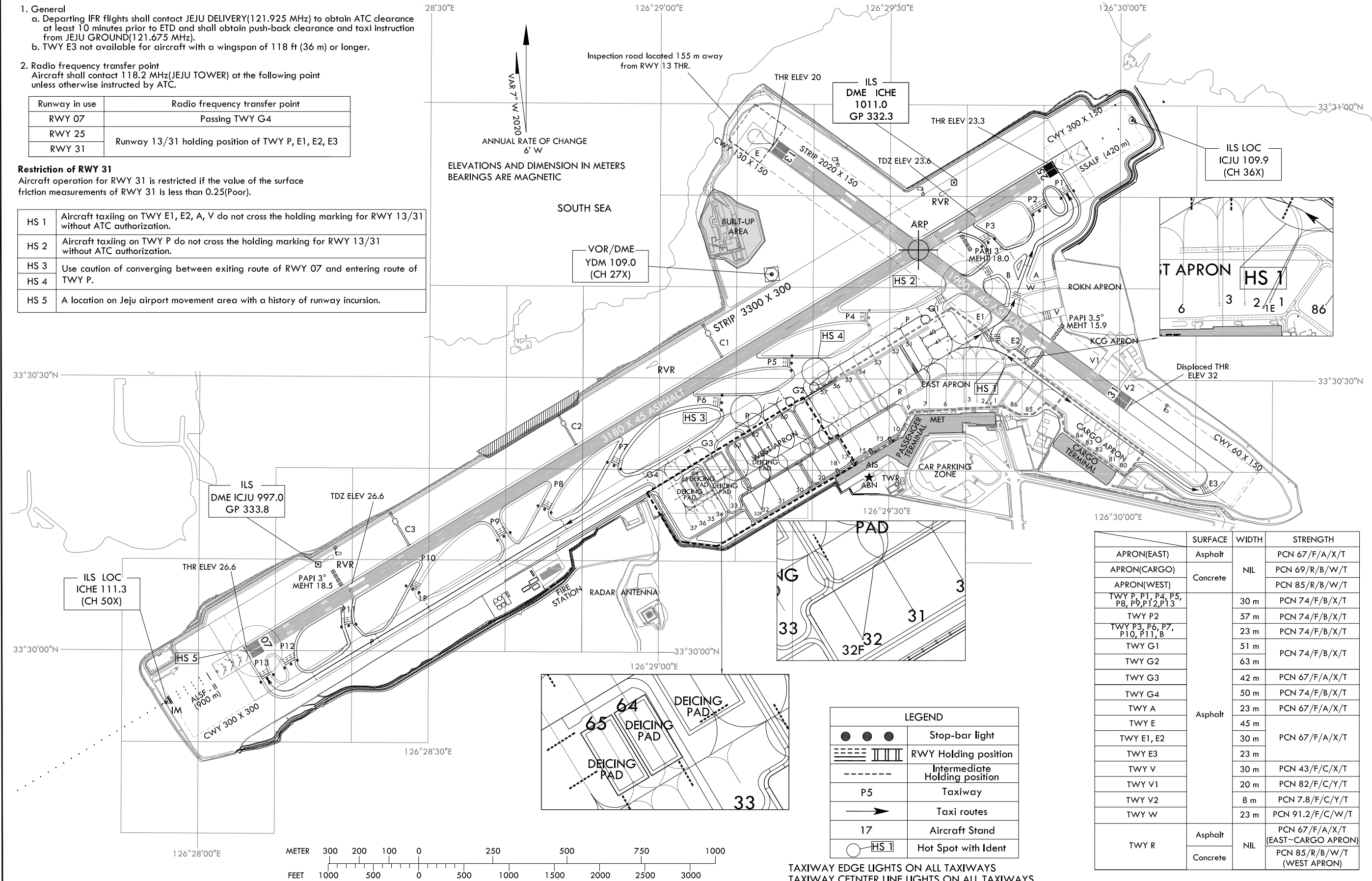
- Radio frequency transfer point
Aircraft shall contact 118.2 MHz(JEJU TOWER) at the following point unless otherwise instructed by ATC.

| Runway in use | Radio frequency transfer point |
|---------------|--|
| RWY 07 | Passing TWY G4 |
| RWY 25 | Runway 13/31 holding position of TWY P, E1, E2, E3 |
| RWY 31 | |

Restriction of RWY 31

Aircraft operation for RWY 31 is restricted if the value of the surface friction measurements of RWY 31 is less than 0.25(Poor).

| | |
|------|--|
| HS 1 | Aircraft taxiing on TWY E1, E2, A, V do not cross the holding marking for RWY 13/31 without ATC authorization. |
| HS 2 | Aircraft taxiing on TWY P do not cross the holding marking for RWY 13/31 without ATC authorization. |
| HS 3 | Use caution of converging between exiting route of RWY 07 and entering route of TWY P. |
| HS 4 | |
| HS 5 | A location on Jeju airport movement area with a history of runway incursion. |



| | SURFACE | WIDTH | STRENGTH |
|-------------------------------------|----------|-------|-----------------------------------|
| APRON(EAST) | Asphalt | | PCN 67/F/A/X/T |
| APRON(CARGO) | Concrete | NIL | PCN 69/R/B/W/T |
| APRON(WEST) | | | PCN 85/R/B/W/T |
| TWY P, P1, P4, P5, P8, P9, P12, P13 | Asphalt | 30 m | PCN 74/F/B/X/T |
| TWY P2 | | 57 m | PCN 74/F/B/X/T |
| TWY P3, P6, P7, P10, P11, B | | 23 m | PCN 74/F/B/X/T |
| TWY G1 | | 51 m | PCN 74/F/B/X/T |
| TWY G2 | | 63 m | PCN 74/F/B/X/T |
| TWY G3 | | 42 m | PCN 67/F/A/X/T |
| TWY G4 | | 50 m | PCN 74/F/B/X/T |
| TWY A | | 23 m | PCN 67/F/A/X/T |
| TWY E | | 45 m | |
| TWY E1, E2 | | 30 m | PCN 67/F/A/X/T |
| TWY E3 | | 23 m | |
| TWY V | | 30 m | PCN 43/F/C/X/T |
| TWY V1 | Asphalt | 20 m | PCN 82/F/C/Y/T |
| TWY V2 | | 8 m | PCN 7.8/F/C/Y/T |
| TWY W | | 23 m | PCN 91.2/F/C/W/T |
| TWY R | Asphalt | | PCN 67/F/A/X/T (EAST-CARGO APRON) |
| | Concrete | NIL | PCN 85/R/B/W/T (WEST APRON) |

| LEGEND | |
|---------|-------------------------------|
| ● ● ● | Stop-bar light |
| ▬ ▬ ▬ | RWY Holding position |
| - - - - | Intermediate Holding position |
| P5 | Taxiway |
| → | Taxi routes |
| 17 | Aircraft Stand |
| ○ HS 1 | Hot Spot with Ident |

TAXIWAY EDGE LIGHTS ON ALL TAXIWAYS
TAXIWAY CENTER LINE LIGHTS ON ALL TAXIWAYS
(except : E, E2, E3, V, V1, W)

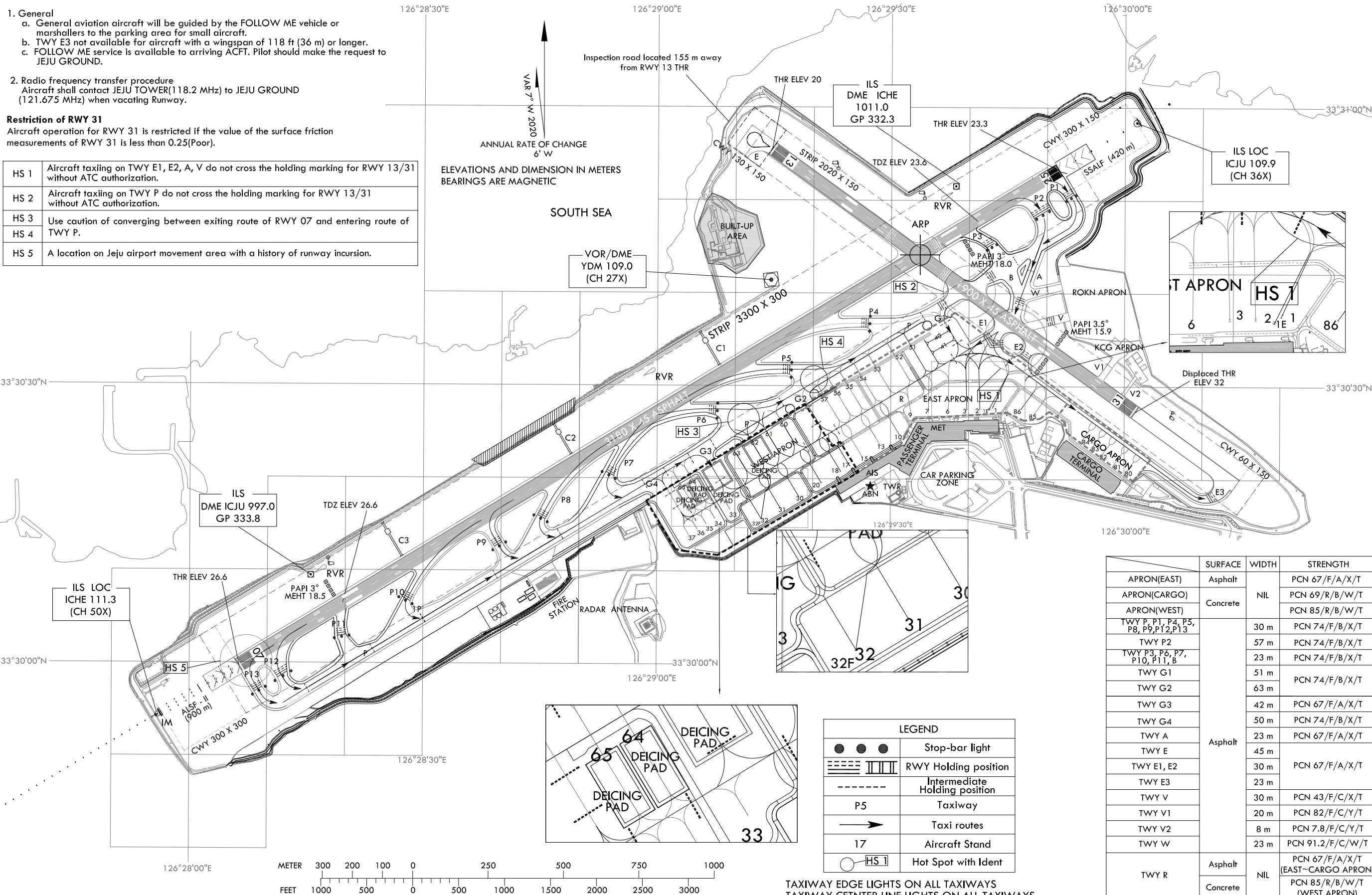
STANDARD GROUND TAXI PROCEDURES

- General
 - General aviation aircraft will be guided by the FOLLOW ME vehicle or marshallers to the parking area for small aircraft.
 - TWY E3 not available for aircraft with a wingspan of 118 ft (36 m) or longer.
 - FOLLOW ME service is available to arriving ACFT. Pilot should make the request to JEJU GROUND.
- Radio frequency transfer procedure
Aircraft shall contact JEJU TOWER(118.2 MHz) to JEJU GROUND (121.675 MHz) when vacating Runway.

Restriction of RWY 31

Aircraft operation for RWY 31 is restricted if the value of the surface friction measurements of RWY 31 is less than 0.25(Poor).

| | |
|------|--|
| HS 1 | Aircraft taxiing on TWY E1, E2, A, V do not cross the holding marking for RWY 13/31 without ATC authorization. |
| HS 2 | Aircraft taxiing on TWY P do not cross the holding marking for RWY 13/31 without ATC authorization. |
| HS 3 | Use caution of converging between exiting route of RWY 07 and entering route of TWY P. |
| HS 4 | |
| HS 5 | A location on Jeju airport movement area with a history of runway incursion. |



| | SURFACE | WIDTH | STRENGTH |
|-------------------------------------|----------|-------|-----------------------------|
| APRON(EAST) | Asphalt | | PCN 67/F/A/X/T |
| APRON(CARGO) | | NIL | PCN 69/R/B/W/T |
| APRON(WEST) | Concrete | | PCN 85/R/B/W/T |
| TWY P, P1, P4, P5, P8, P9, P12, P13 | | 30 m | PCN 74/F/B/X/T |
| TWY P2 | | 57 m | PCN 74/F/B/X/T |
| TWY P3, P6, P7, P10, P11, B | | 23 m | PCN 74/F/B/X/T |
| TWY G1 | | 51 m | PCN 74/F/B/X/T |
| TWY G2 | | 63 m | PCN 74/F/B/X/T |
| TWY G3 | | 42 m | PCN 67/F/A/X/T |
| TWY G4 | | 50 m | PCN 74/F/B/X/T |
| TWY A | Asphalt | 23 m | PCN 67/F/A/X/T |
| TWY E | | 45 m | PCN 67/F/A/X/T |
| TWY E1, E2 | | 30 m | PCN 67/F/A/X/T |
| TWY E3 | | 23 m | PCN 67/F/A/X/T |
| TWY V | | 30 m | PCN 43/F/C/X/T |
| TWY V1 | | 20 m | PCN 82/F/C/Y/T |
| TWY V2 | | 8 m | PCN 7.8/F/C/Y/T |
| TWY W | | 23 m | PCN 91.2/F/C/W/T |
| TWY R | Asphalt | | PCN 67/F/A/X/T |
| | Concrete | NIL | PCN 85/R/B/W/T (WEST APRON) |

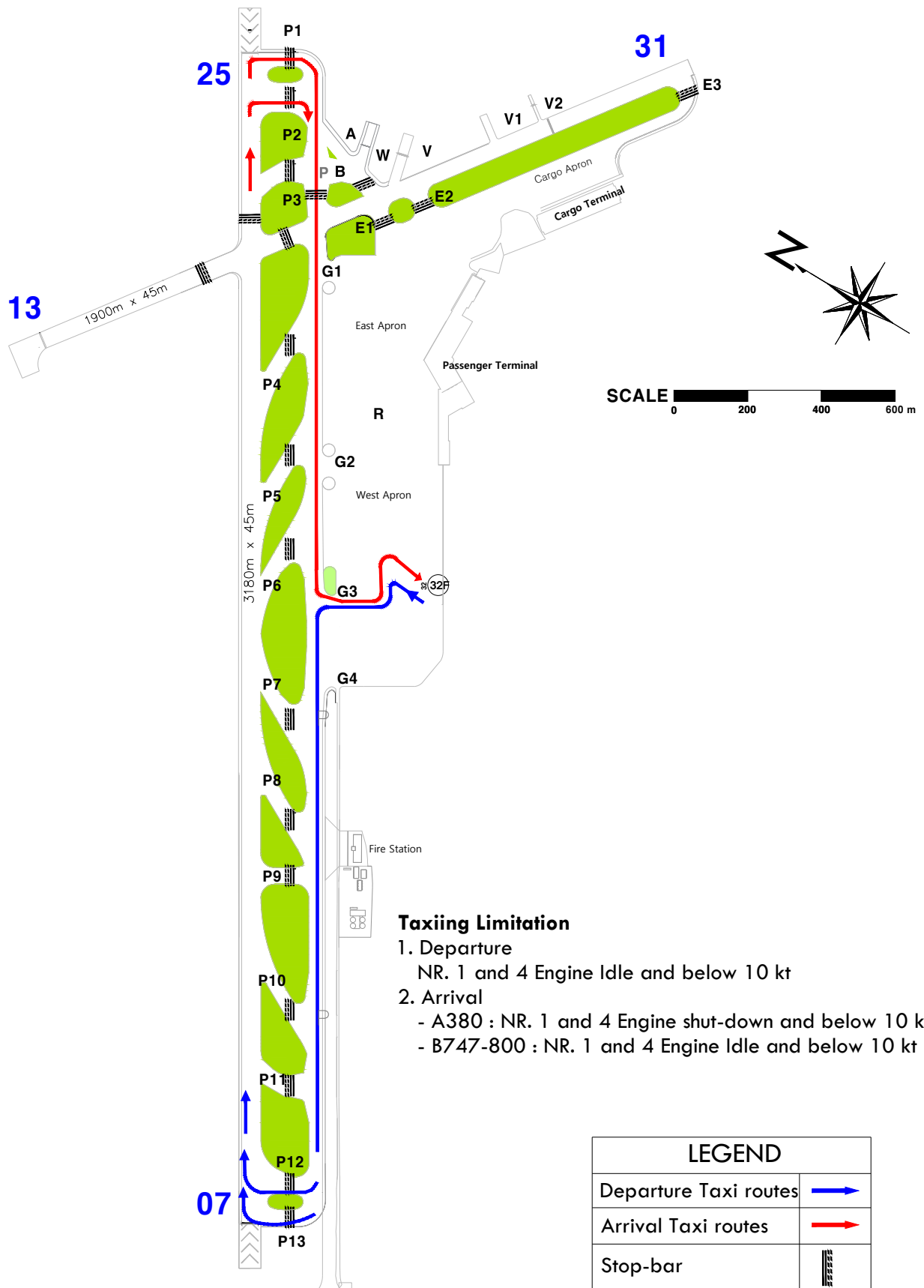
| LEGEND | |
|-----------|-------------------------------|
| ● ● ● | Stop-bar light |
| ▬ ▬ ▬ | RWY Holding position |
| - - - - - | Intermediate Holding position |
| P5 | Taxiway |
| → | Taxi routes |
| 17 | Aircraft Stand |
| ○ HS 1 | Hot Spot with Ident |

TAXIWAY EDGE LIGHTS ON ALL TAXIWAYS
TAXIWAY CENTER LINE LIGHTS ON ALL TAXIWAYS
(except : E, E2, E3, V, V1, W)

JEJU TWR 118.2
JEJU GND 121.675

"F" aircraft Available taxi route - RWY 07 IN USE

Available only for Code Letter "F" Aircraft

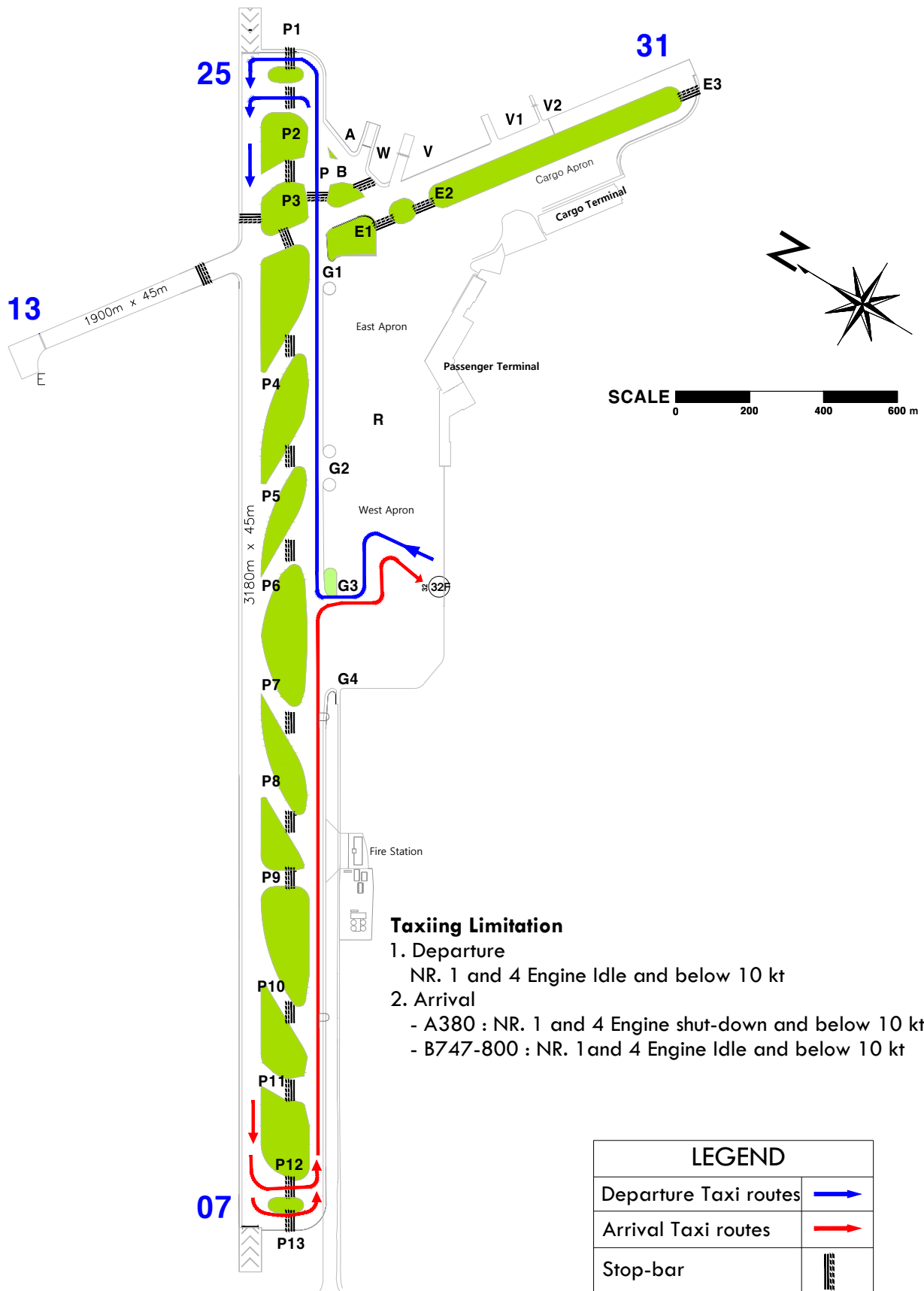


Change : Information of GND frequency(121.65 MHz → 121.675 MHz).

JEJU TWR 118.2
JEJU GND 121.675

"F" aircraft Available taxi route - RWY 25 IN USE

Available only for Code Letter "F" Aircraft



Change : Information of GND frequency(121.65 MHz → 121.675 MHz).